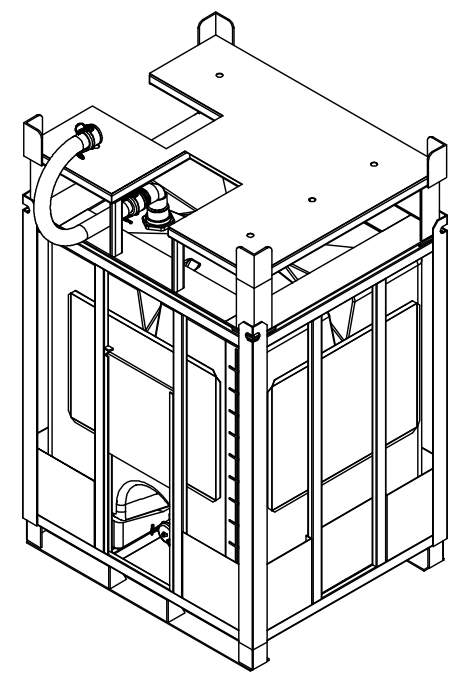
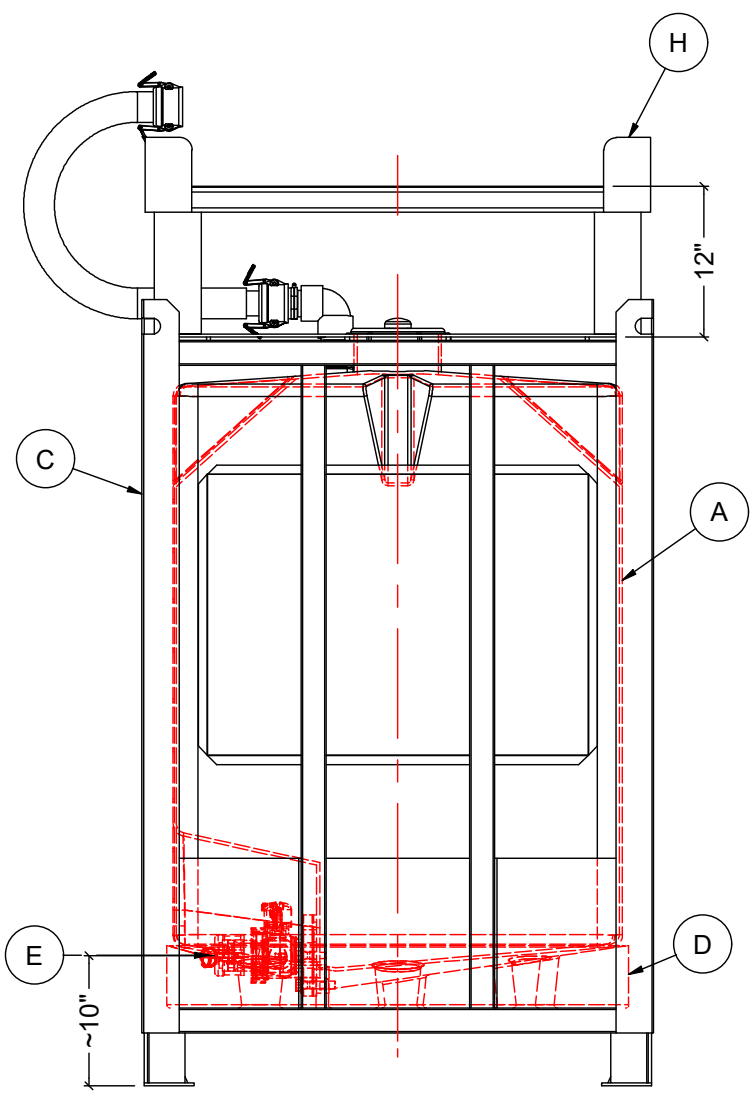
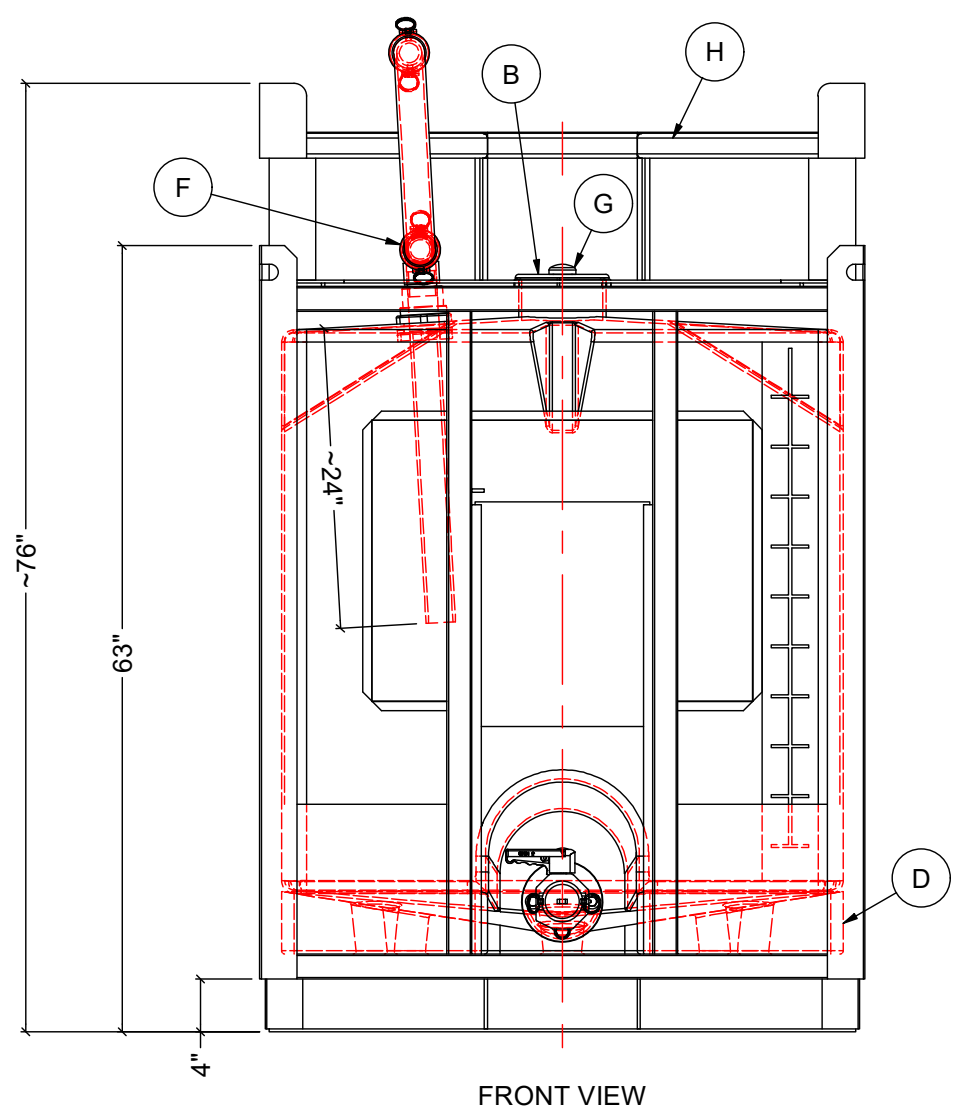



NOTES:  
 1. TANK IS AN ACO MODEL# PTC-250TDA.  
 2. ALL DIMENSIONS ARE APPROX.  
 3. SOME PARTS WILL SHIP LOOSE TO AVOID DAMAGE DURING TRANSPORT.  
 4. NOT UN APPROVED FOR TRANSPORTATION OF HAZARDOUS GOODS.

MATERIALS LIST		
ITEM	DESCRIPTION	NOTES
A	PTC-250 (HDPE OR XLPE) BOTTLE	
B	6" HDPE THREADED LID WITH GASKET (EPDM OR VITON) AND TIE DOWN	
C	STEEL FRAME WITH 12" KICK PLATES AND VALVE PROTECTION GATE	
D	BLACK POLY FRAME PILLOW	
E	2" BALL VALVE (POLYPRO OR STAINLESS STEEL) WITH GASKET (EPDM OR VITON)	FNPT OR CAMLOC
F	2" DOWNLOAD ASSEMBLY WITH TRANSFER HOSE	
G	1" TWO-WAY MUSHROOM VENT ASSEMBLY	
H	STEEL STACKING SPACER FOR PTC-250 WITH 12" ELEVATION AND POWDER COAT FINISH	



REV	DATE	DESCRIPTION	BY	APPD	REVD
REVISIONS					
CUSTOMER					
TITLE			ACO JOB NO:		
250IG (1,175L) MOTHER BIN ASSEMBLY			PO#:		
			EQUIP. NO:		
THIS DRAWING IS THE PROPERTY OF ROTOPLAST INC. AND SHALL NOT BE COPIED OR TRANSFERRED WITHOUT THE WRITTEN CONSENT OF ROTOPLAST INC.			 A division of Rotoplast Inc.		
ENGINEERS SEAL		ACO CONTAINER SYSTEMS DIVISION OF ROTOPLAST INC. 794 MCKAY ROAD PICKERING, ONTARIO, CANADA TEL: 905-683-8222 WEB: ACOTAINERS.COM		DESIGNED	WM
				DRAWN	
				CHECKED	
				APPROVED	
				SCALE	N.T.S.
				DATE	NOV-13-2024
DWG No		MOBI-250			REV 0

SIDE VIEW