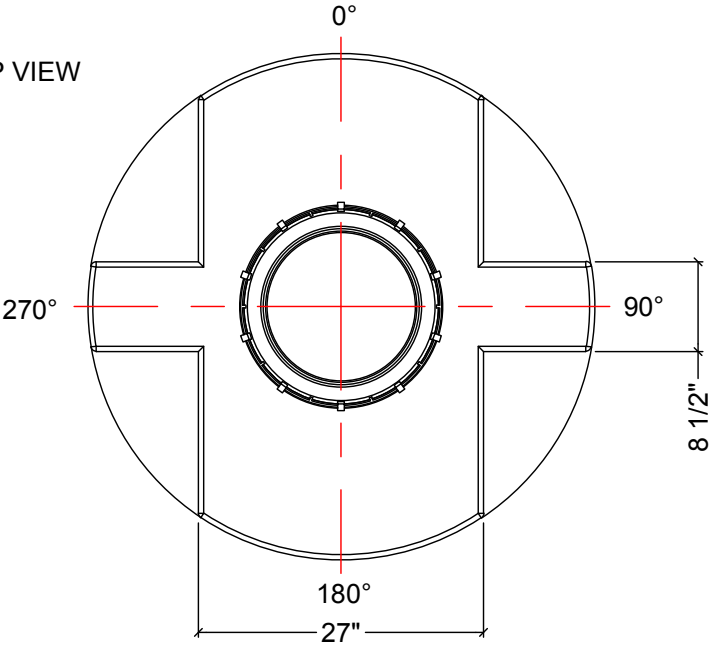


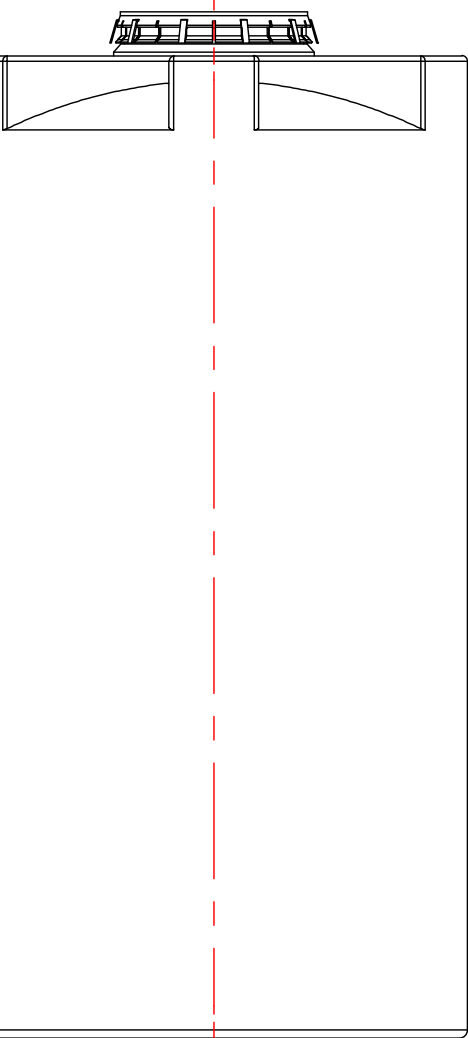
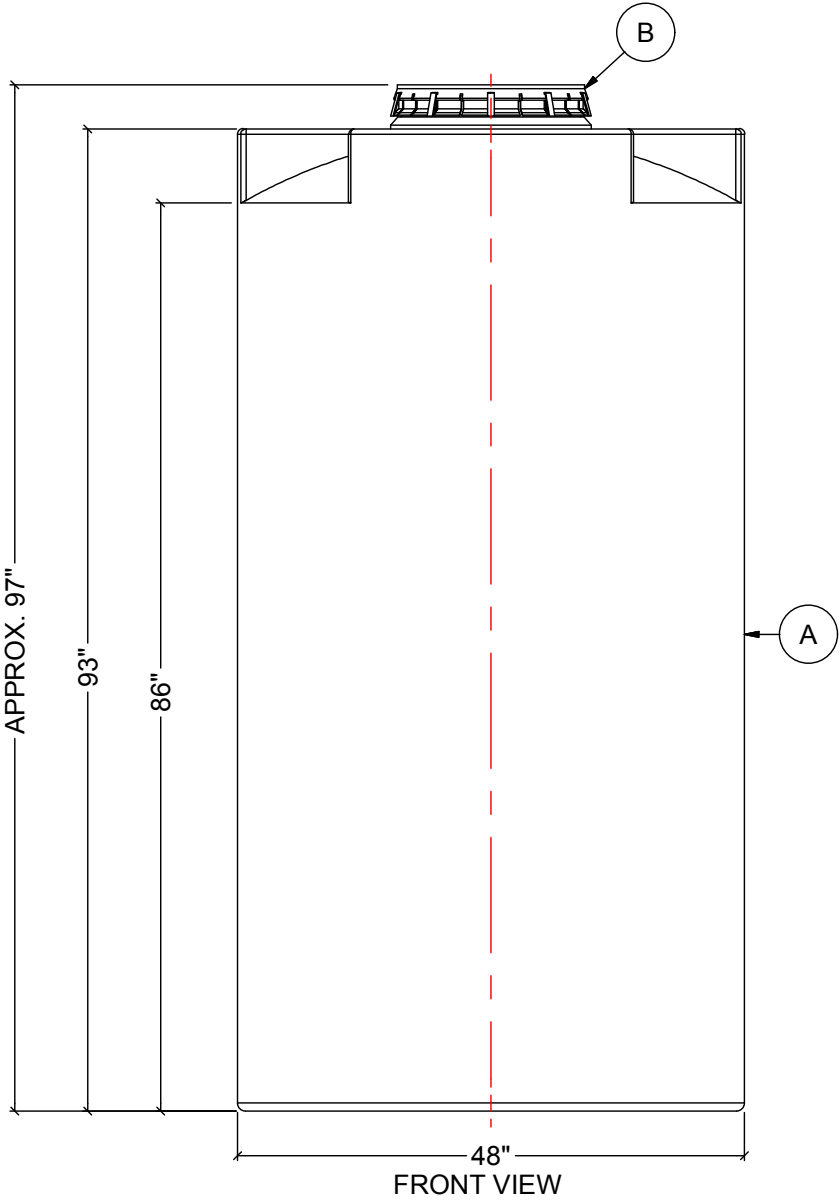
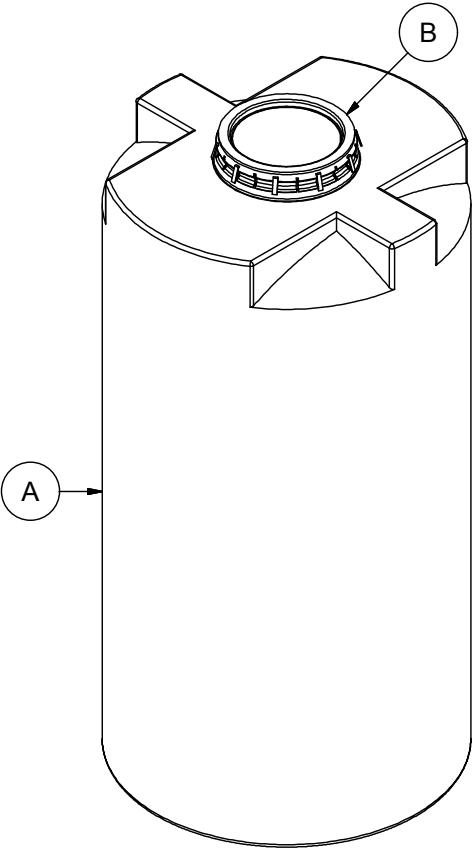
TOP VIEW



NOTES:

- 1. TANK IS MANUFACTURED TO ASTM-D-1998 STANDARD.
- 2. ALL DIMENSIONS ARE APPROXIMATE.

MATERIALS LIST		
ITEMS	DESCRIPTION	NOTES
A	CT-500-CH TANK	
B	16" LID WITH LOCKING STRAP	



REV	DATE	DESCRIPTION	BY	APPD	REVD
REVISIONS					
CUSTOMER					
TITLE		ACO JOB NO:			
500 IG CLOSED TOP TANK		PURCHASE ORDER NO:			
		PURCHASER'S EQUIP. NO:			
THIS DRAWING IS THE PROPERTY OF ROTOPLAST INC. AND SHALL NOT BE COPIED OR TRANSFERRED WITHOUT THE WRITTEN CONSENT OF ROTOPLAST INC.					
ENGINEERS SEAL		ACO CONTAINER SYSTEMS			
		DIVISION OF ROTOPLAST INC.			
		PICKERING - ONTARIO - CANADA			
		ACO CONTAINER SYSTEMS		DESIGNED	
		DIVISION OF ROTOPLAST INC.		DRAWN	WM
		794 MCKAY RD.		CHECKED	
		PICKERING, ONTARIO, CANADA		APPROVED	
		TEL. 905-683-8222		SCALE	N.T.S.
FAX 905-683-2969		DATE	02-03-16		
DWG No		CT-500-CH			REV 0