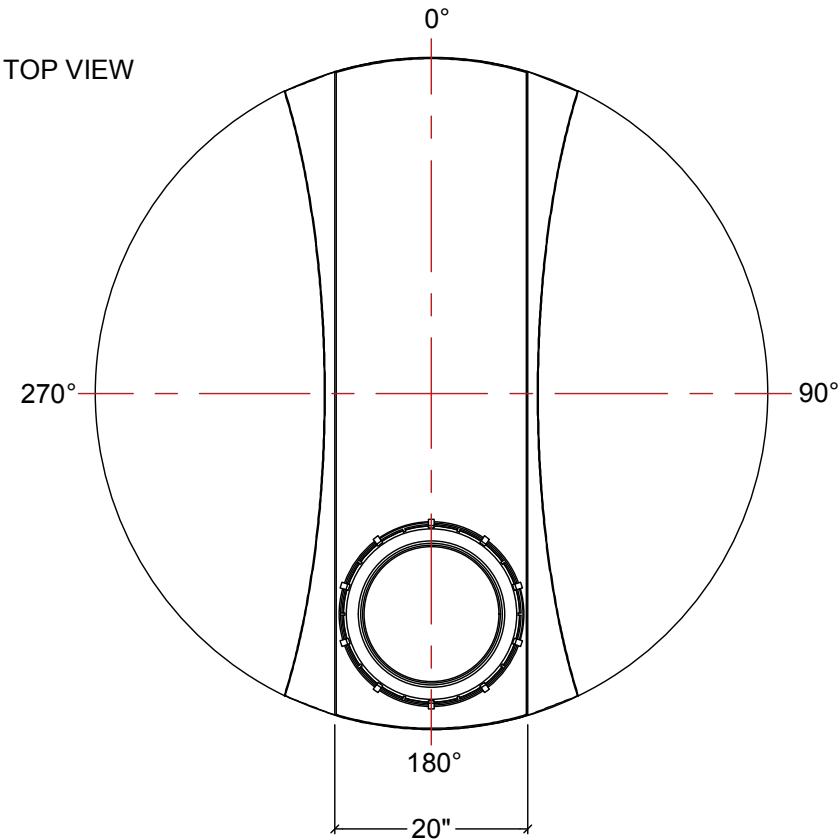
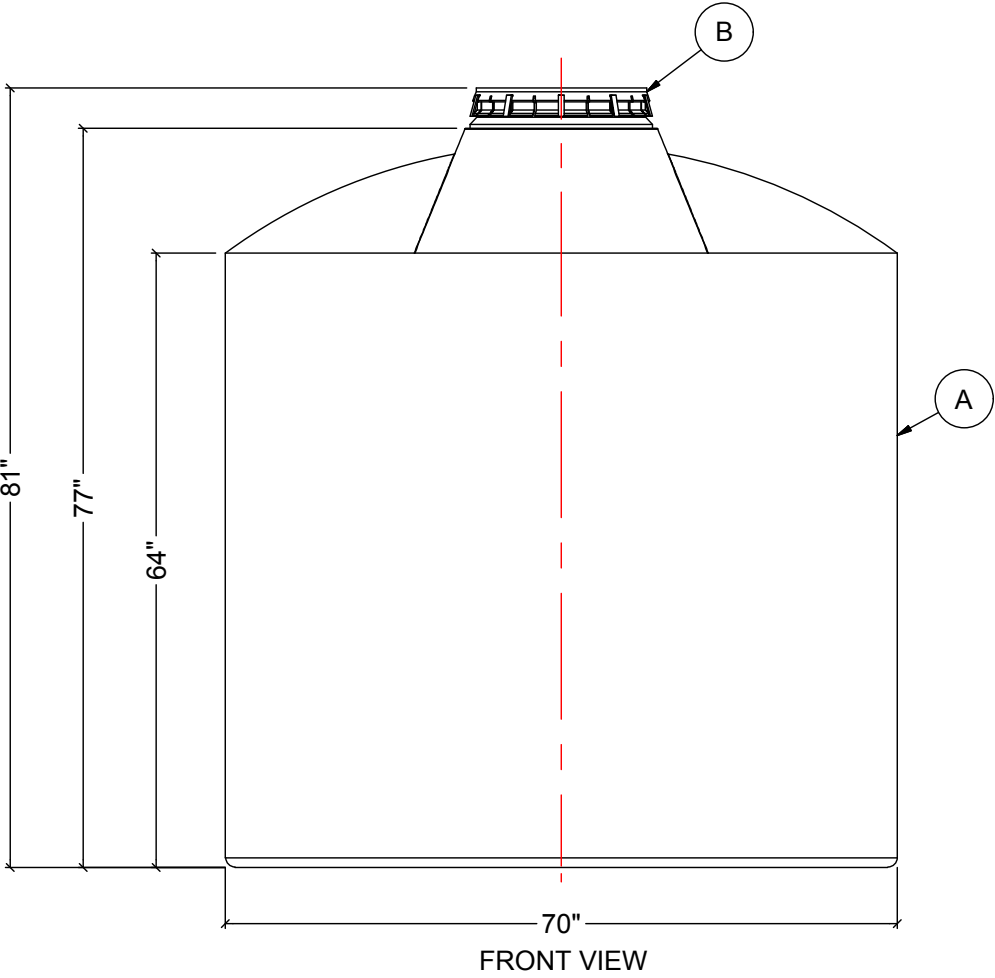


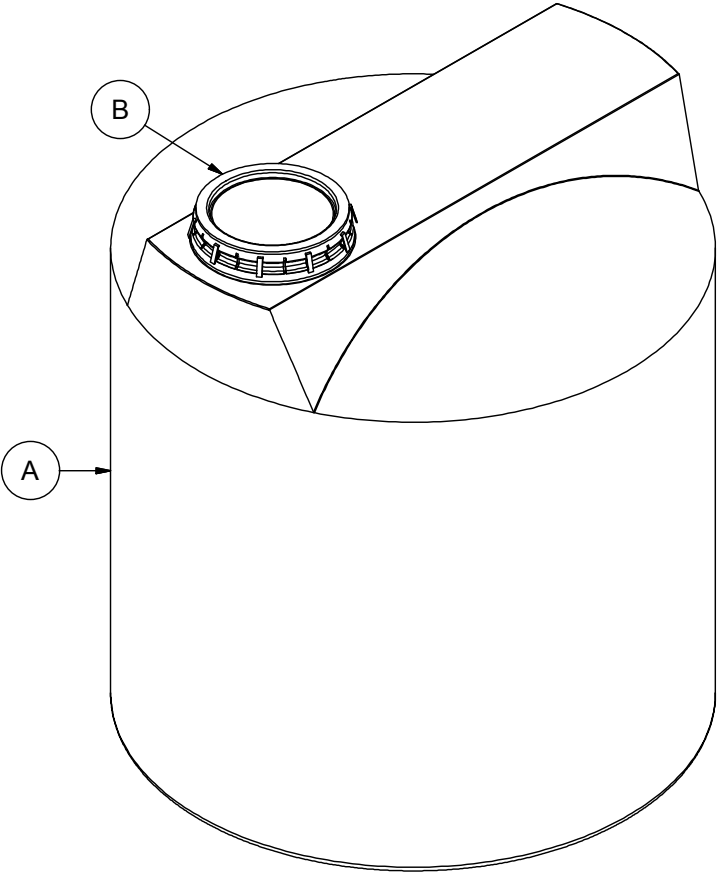
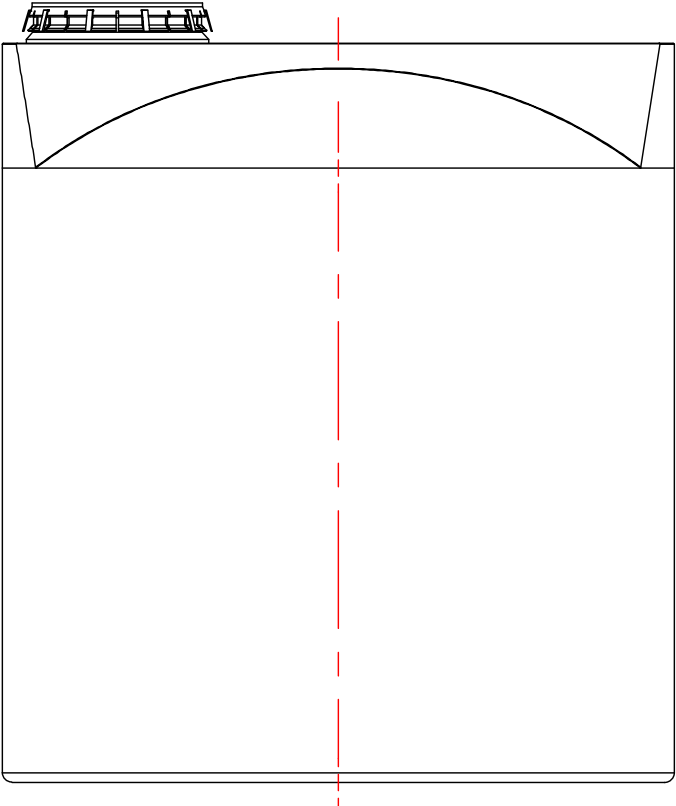
TOP VIEW



- NOTES:
- 1. TANK IS MANUFACTURED TO ASTM-D-1998 STANDARD.
  - 2. ALL DIMENSIONS ARE APPROXIMATE.



SIDE VIEW



MATERIALS LIST		
ITEMS	DESCRIPTION	NOTES
A	CT-1010 TANK	
B	16" LID WITH LOCKING STRAP	

REV	DATE	DESCRIPTION	BY	APPD	REVD
REVISIONS					
CUSTOMER					
TITLE		ACO JOB NO:			
1000IG CLOSED TOP TANK		PURCHASE ORDER NO:			
		PURCHASER'S EQUIP. NO:			
THIS DRAWING IS THE PROPERTY OF ROTOPLAST INC. AND SHALL NOT BE COPIED OR TRANSFERRED WITHOUT THE WRITTEN CONSENT OF ROTOPLAST INC.					
ENGINEERS SEAL		ACO CONTAINER SYSTEMS			
		DIVISION OF ROTOPLAST INC.			
		PICKERING - ONTARIO - CANADA			
		ACO CONTAINER SYSTEMS DIVISION OF ROTOPLAST INC. 794 MCKAY RD. PICKERING, ONTARIO, CANADA TEL. 905-683-8222 FAX 905-683-2969		DESIGNED	
		DRAWN	WM		
		CHECKED			
		APPROVED			
		SCALE	N.T.S.		
		DATE	02-03-16		
DWG No		CT-1010			REV 0