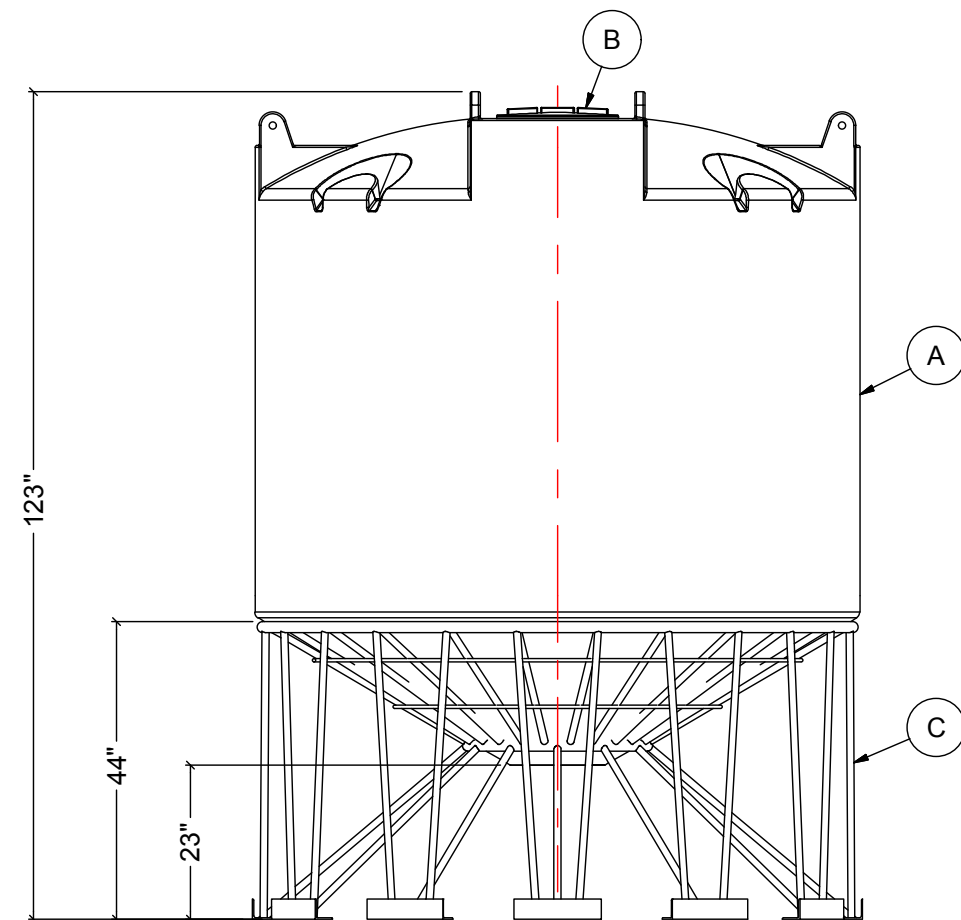
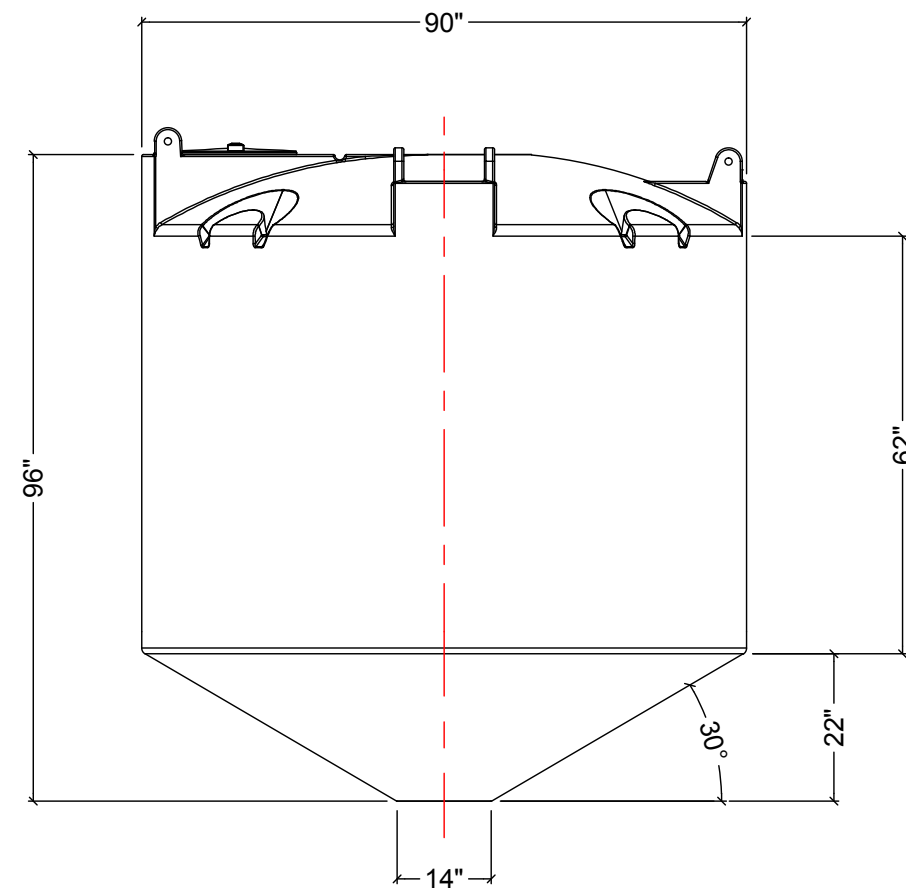


NOTES:

1. TANK IS MANUFACTURED FROM HDPE. (1.5 SG)
2. TANK IS MANUFACTURED TO ASTM-D-1998 STANDARD.
3. ACO RECOMMENDS ALL FLANGE GASKETS TO BE MIN. 1/4" THICK.
4. ALL FITTING GASKETS ARE EPDM.
5. ON LARGER SIZED TANKS SOME MECHANICAL FITTINGS MAY NEED TO BE REMOVED IN ORDER TO AVOID WIDE OR OVERSIZED LOADS.

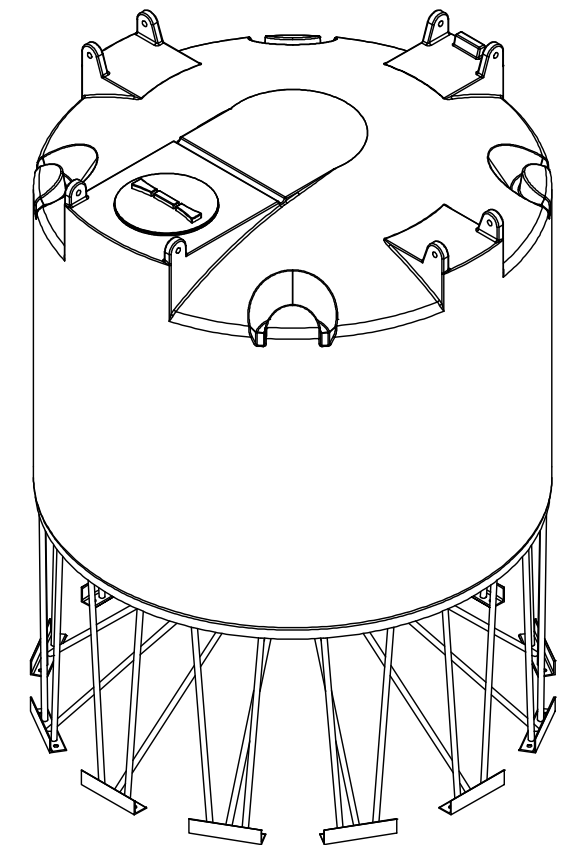


FRONT VIEW



SIDE VIEW

MATERIALS LIST		
ITEMS	DESCRIPTION	NOTES
A	CBC-1690 CONE BOTTOM TANK	
B	15" THREADED LID	
C	STEEL STAND FOR CBC-1690	



REV	DATE	DESCRIPTION	BY	APPD	REVD
REVISIONS					
CUSTOMER					
TITLE		ACO JOB NO:			
1665 IG CONE BOTTOM TANK		PURCHASE ORDER NO:			
		PURCHASER'S EQUIP. NO:			
THIS DRAWING IS THE PROPERTY OF ROTOPLAST INC. AND SHALL NOT BE COPIED OR TRANSFERRED WITHOUT THE WRITTEN CONSENT OF ROTOPLAST INC.					
ENGINEERS SEAL		ACO CONTAINER SYSTEMS			
		DIVISION OF ROTOPLAST INC.			
		PICKERING - ONTARIO - CANADA			
		ACO CONTAINER SYSTEMS		DESIGNED	
		DIVISION OF ROTOPLAST INC.		DRAWN	WM
		794 MCKAY RD.		CHECKED	
		PICKERING, ONTARIO, CANADA		APPROVED	
		TEL. 905-683-8222		SCALE	N.T.S.
FAX 905-683-2969		DATE	29-03-16		
DWG No		CBC-1690			REV 0