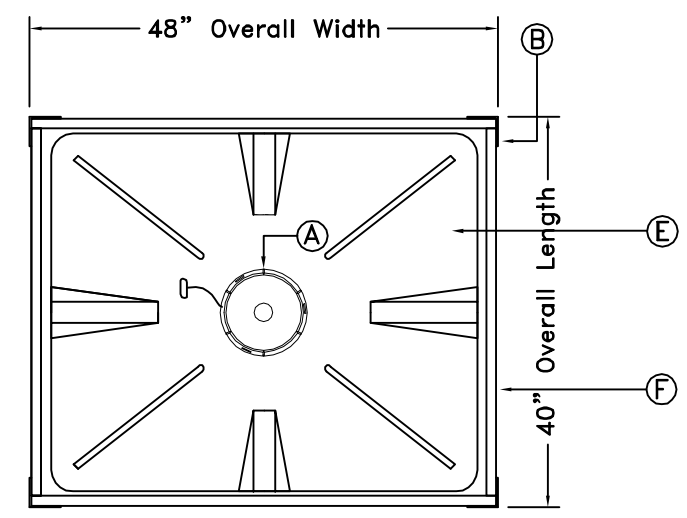
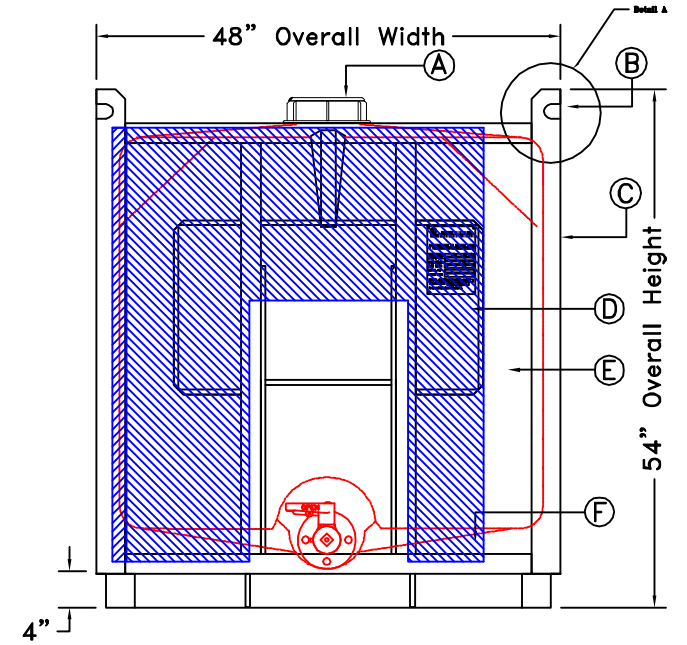
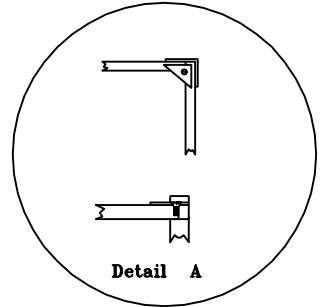


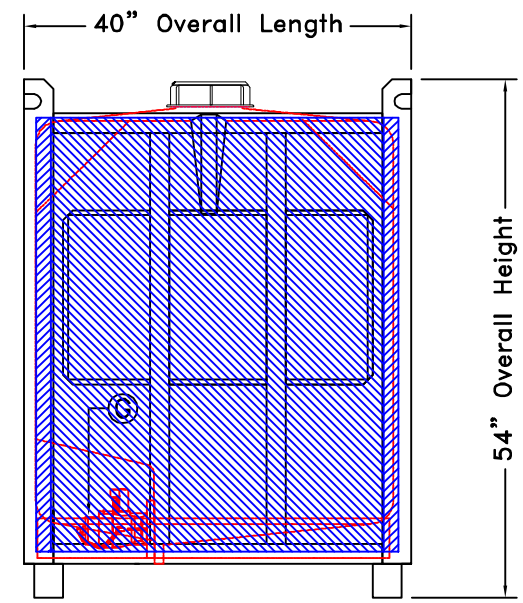
**\*\* RATED WEIGHT CAPACITIES \*\***  
 TARE WEIGHT (EMPTY): 248 KGS.  
 GROSS WEIGHT (OPERATING): 1,714 KGS.



**PLAN VIEW**



**FRONT VIEW**



**SIDE VIEW**

**NOZZLE SCHEDULE**

ITEM	SIZE	DESCRIPTION	NOTES
A	6	MANHOLE	POLY LID
B	--	STACKING BRACKET	
C	3 X 3	STEEL FRAME	ANGLE 3/16 THICK
D	--	SUPPORT PLATE	
E	--	CONTAINER	POLY
F	2 X 1	STEEL TUBING	TUBING 1/8 THICK
G	2	BALL VALVE	POLYPROPYLENE

**NOTES:**

1. TANK IS MANUFACTURED FROM HDPE. (1.5 SG)
2. TANK IS MANUFACTURED TO ASTM-D-1998 STANDARD.

REV	DATE	DESCRIPTION	BY	APPD	REVD
REVISIONS					

CUSTOMER \_\_\_\_\_

TITLE \_\_\_\_\_

ACO JOB NO: -

PURCHASE ORDER NO: -

PURCHASER'S EQUIP. NO: -

THIS DRAWING IS THE PROPERTY OF ROTOPLAST INC. AND SHALL NOT BE COPIED OR TRANSFERRED WITHOUT THE WRITTEN CONSENT OF ROTOPLAST INC.

ENGINEERS SEAL

**ACO CONTAINER SYSTEMS**  
 DIVISION OF ROTOPLAST INC.

PICKERING - ONTARIO - CANADA

ACO CONTAINER SYSTEMS	DESIGNED	-
DIVISION OF ROTOPLAST INC.	DRAWN	-
794 MCKAY RD.	CHECKED	
PICKERING, ONTARIO, CANADA	APPROVED	
TEL. 905-683-8222	SCALE	N.T.S.
FAX 905-683-2969	DATE	-

DWG No **PTC-200-FE** REV **0**